



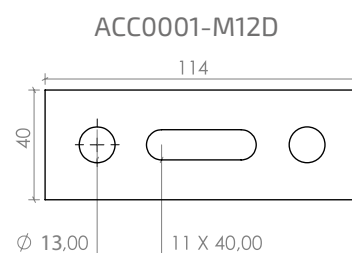
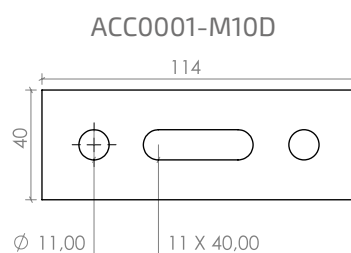
Tetti a falda



Lamiera ondulata

# ACC0001-M10D/ACC0001-M12D

## Piastrina



## Caratteristiche Materiali

Materiale: **X5 CrNi 18-10 (AISI 304)**;

Forma del prodotto: **C (nastro laminato a freddo)**;

Finitura: **2B (nastro trattato termicamente, decapato, skinpassato)**;

Densità: **7,9 g/m<sup>3</sup>**;

Resistenza alla trazione: **540 – 750 N/mm<sup>2</sup>**;

Allungamento: **45 % min.**;

Durezza: **82 HRB**.

## Caratteristiche Tecniche

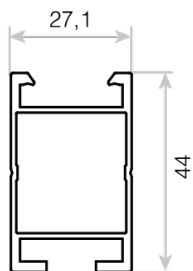
Spessore: **5mm**;

Profili compatibili: **PRT2334, PRT2640, PRT2947**;

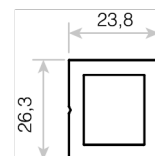
Attacco profilo: **inferiore**.

## Profili compatibili e rispettive giunzioni

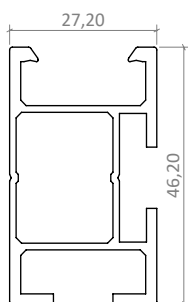
**PRT2334-340** 3400mm  
**PRT2334-113** 1130mm



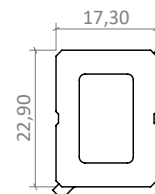
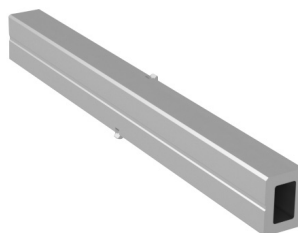
**PRL3360**



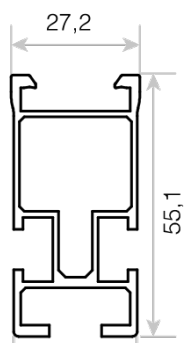
**PRT2640-340** 3400mm  
**PRT2640-113** 1130mm



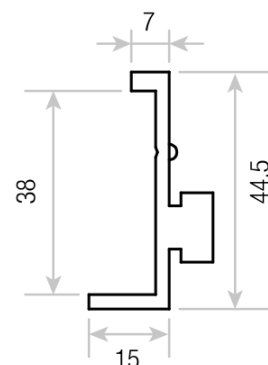
**PRG2612**



**PRT2947-340** 3400mm  
**PRT2947-113** 1130mm



**PRL2580**



Con tale profilo è necessario abbinare i seguenti accessori:

**VT0018**  
Dado flangiato M10



**VT1002**  
Vite testa a martello M10x25



## Accessori

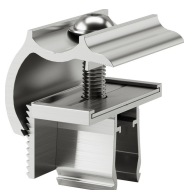
**KMCU2950**  
Universale centrale



**VT0018**  
Dado flangiato M10



**KMTU2950**  
Universale terminale



**VT1002**  
Vite testa a martello M10x25

